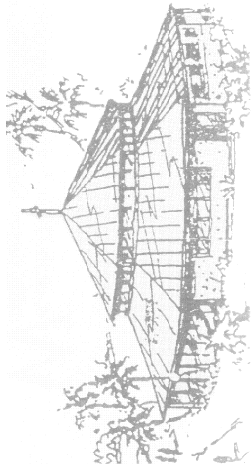


RETURN SERVICES REQUESTED



## CALENDAR

### DECEMBER

- 17 St. Joseph RCIA here for retreat  
19-31 Guest rooms closed for Christmas season.  
31 Eucharistic Vigil from 8:30PM - Midnight

### JANUARY

- 8 Oblate Day at Monastery, 2-6 PM. Pot-luck.  
Novice class begins at 1 PM.

### FEBRUARY

- 4 Pearl Harbor RCIA here for retreat  
5 Oblate Day at Monastery, 2-6 PM Pot-luck.  
Novice Class begins at 1 PM  
11 Our Lady of Sorrows Youth and Resurrection of  
the Lord RCIA groups here for retreat.  
18 Resurrection of the Lord catechists here.  
22 Ash Wednesday  
25 BCC youth team here for retreat preparation.  
8:30 AM- 2:00 PM.

### MARCH

- 2-4 BCC Youth retreat at St. Stephen Diocesan  
Center. Contact monastery for information.  
3 St. John's Women's Marian Guild retreat here.  
4 Annual Oblate Retreat at the Monastery. 10:00  
AM - 6:00 PM. Pot-luck.  
10 BCC retreat team here for retreat preparation.  
8:30 AM- 2:00 PM.  
16-18 BCC retreat for adults at St. Anthony Retreat  
Ctr. Call monastery for registration information.  
24 St. John's RCIA here for retreat.

**The Hawaiian Benedictine** is distributed  
quarterly by the Benedictine Monastery of  
Hawaii free to benefactors, friends and any-  
one who requests it.

Editor: Br. Gregory Foret OSB

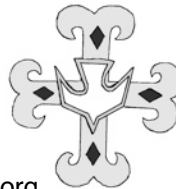
Address: PO Box 490  
Waialua, HI 96791

Phone: 808-637-7887

Fax: 808-637-8601

Web: [www.hawaiibenedictines.org](http://www.hawaiibenedictines.org)

E-Mail: [monastery@hawaiibenedictines.org](mailto:monastery@hawaiibenedictines.org)



## FROM THE DAILY LOG:

MS- Fr. Michael Sawyer      MJ- Sr. Mary Jo McEnany  
TO- Fr. Tim Ottman          AC- Sr. Ann Cic  
DB- Fr. David Barfknecht      GS- Sr. GERALYN Spaulding  
GF- Br. Gregory Foret          ID- Br. Isidore Derouen  
CC- Sr. Celeste Cabral          AY- Austin Yee

**Aug. 24:** Tan Focus fails to start for DB in Wahiawa. It was taken to a garage in Waialua. Battery and alternator need replacement. GS has Rachel's Vineyard mtg. in evening.

**Aug. 31:** Tan Focus returns from mechanic's. Rachel Perkin brings sample painted etched glass window; mounted over the chapel.

**Sep. 2:** Tan Focus fails to start for AY in Kaneohe. Unable to reach monastery for 4 hrs. DB picks him up. Car towed to Sears garage. Cause undetermined.

**Sep. 3:** MJ gives a women's AA retreat at St. Anthony retreat house. CC a guest of brother/coach Brian Cabral for the UH/Colorado football game. Given several flats of leftover Gatorade and water. AC taken to Wahiawa Hospital and admitted. DB has evening mass at St. Joachim.

**Sep. 9:** AC transferred from Wahiawa Hosp. to Queens for more Neurological testing. GF has a biopsy taken in East Honolulu.

**Sep. 24:** BCC pre-retreat gathering here. DB and GS lead worship and give a talk to Pecos Abbey Oblates in retreat through a Skype video conference (*see On My Mind picture*). CC attends a reunion of World Youth day pilgrims.

**Sep. 30:** We receive word that neighboring Stanhope Farms was purchased by a new owner in Waialua. Several termite damaged doors in pavilion replaced.

**Oct. 1:** 6 from Resurrection parish here to put up ceiling panels at the columbarium. GF hauls a truck load of scrap metal and old computers to a recycling fair.

**Oct. 6:** AC receives first home visit from therapist. TO given a pair of wireless headphones. Five attend 25th Anniv. dinner for Billy/Leslie Titcomb and a concert.

**Oct. 29:** BCC youth here for pre-retreat. DB and ID attend a 50th year ordination anniv. mass and dinner for Fr. Larry Fischer.

**Nov. 3:** CC picks up GF from Queens Med. Ctr. following prostate surgery. MS and MJ attend funeral of Kent Nakamura.

**Nov. 12:** DB and CC mow along the entrance road.